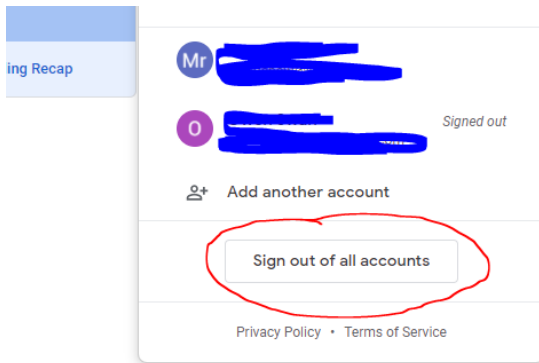
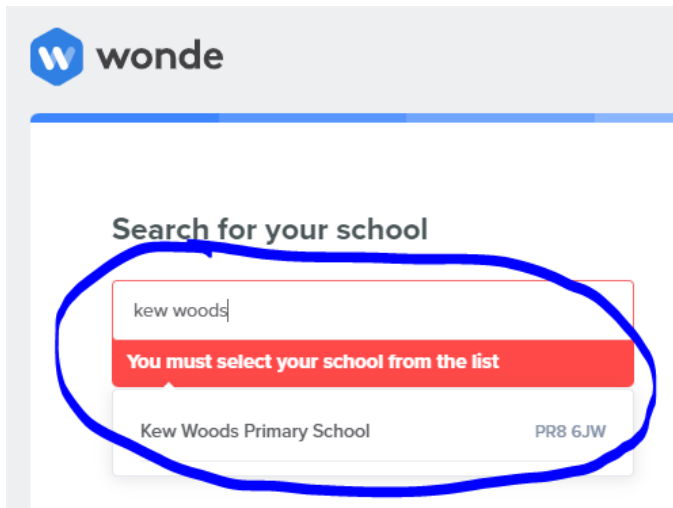


How to Login to Google Classroom

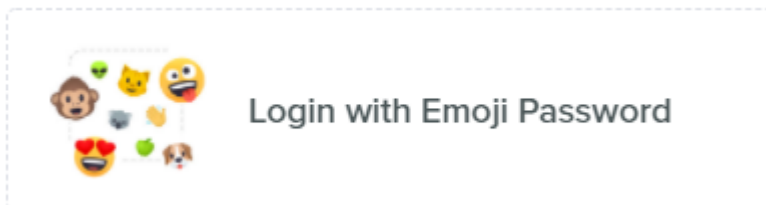
1. Go to google.com and make sure you have signed out of any pre-logged in email accounts. **(This is an important step)**



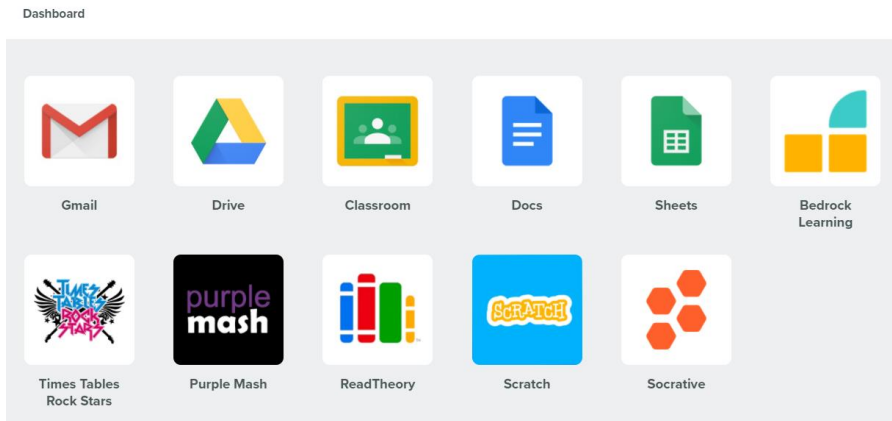
2. Go to www.wonde.com/emoji
3. Find 'Kew Woods Primary' on the list



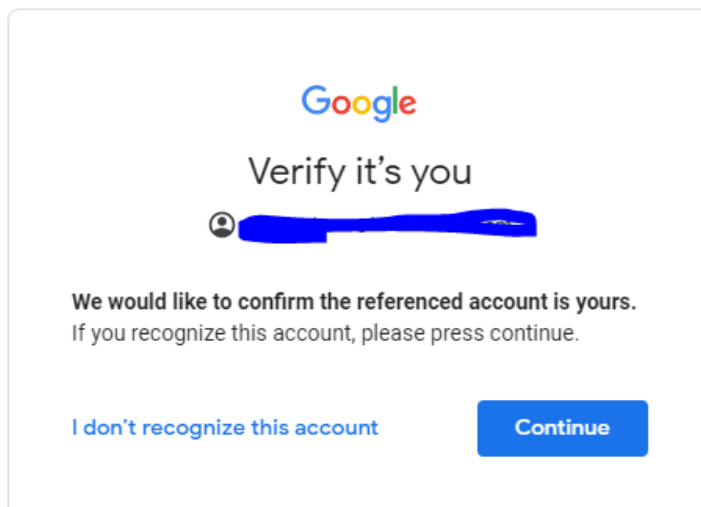
4. Then, log in using the emoji code



5. You will then see this dashboard



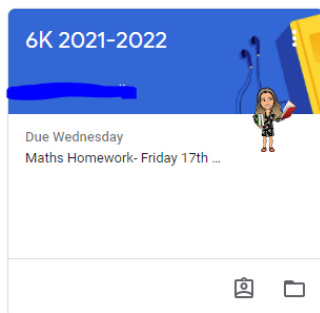
6. You will then see this confirmation screen.



7. If the class doesn't appear, please click on the + sign in the top right

☰ Google Classroom

📅 To do 📅 Calendar



If you have a Google email account, you must do step 1!